

Terry Z. Project – Detailed view

By Bill Weis

Terry Z. - ALS

Requirements:

1. Be able to control his bed Hill Rom Total Care semi-electric bed using the Tobii Communicator 5 app.

Solution – High Level:

1. We designed a microcontroller-based solution that provides the desired functions of Head Up, Head Down, Feet Up, Feet Down. All four of these functions can be controlled using the Tobii as well as using an attendant side panel control.

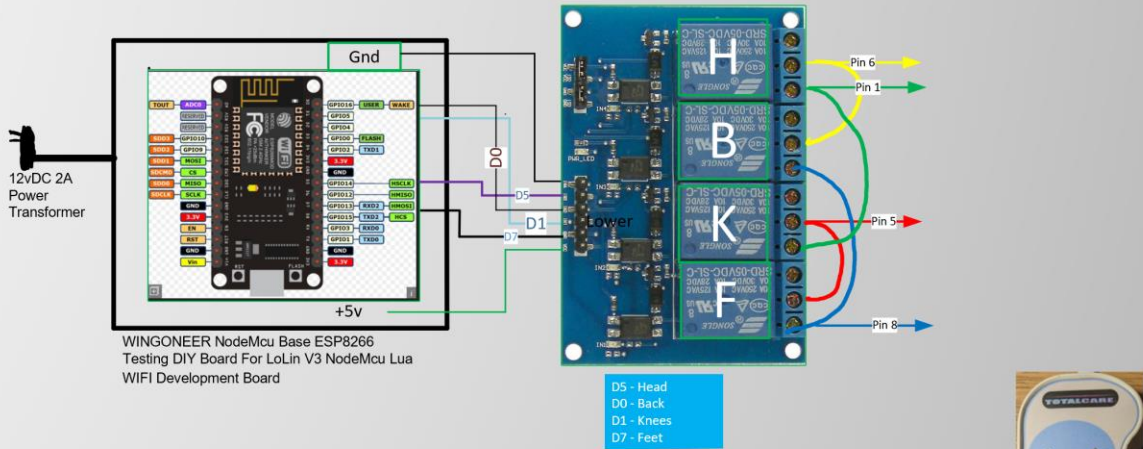
Details of the Solution

1 – Control his bed via the Tobii – Terry has a Hill Rom Total Care semi-electric bed with a P1934A pendant. He wanted to be able to use Communicator 5 on his Tobii to control the bed, but he did not want the Tobii speaking those commands during the night since that would have impacted his wife’s sleep. We designed a solution that met these requirements. We provided Terry with a custom page that he loaded into his Tobii. The commands run for a specific duration in seconds and all commands run silently.



Here is a schematic of the solution

Voice Controlled Bed Controller for Terry Z, mechanical relays to drive the Hillrom Total Care semi-Electric bed with P1934A Pendant
Bill Weis 6-30-2022
S/N 22111.06



Flexible Flat Cable, 8 conductor 1mm pitch
Pin 1-6 Head Up Green to Yellow
Pin 8-6 Head Down Blue to Yellow
Pin 1-5 Feet Up Green to Red
Pin 8-5 Feet Down Blue to Red

