

# Dana B. Project – Detailed view

By Bill Weis

## *Dana Bressler - ALS*

Requirements:

1. Be able to use voice commands control the bed
2. Be able to use voice commands to control the TV

Solution – High Level:

1. We designed a solution which allows Dana to control her Medline full electric bed. Model MDR107003L with wired hand remote MDR630154R
2. We provided Dana with an Amazon Fire TV Cube to control the TV

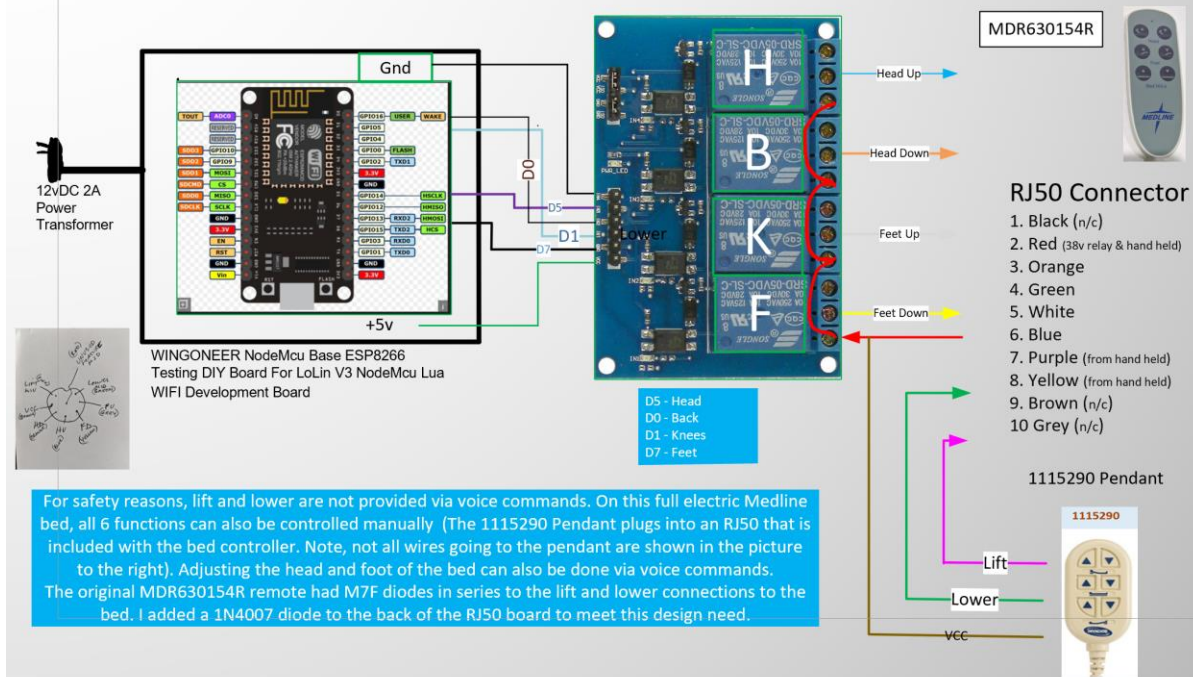
### **1. Be able to issue voice commands to her full electric Medline bed model MDR107003L with wired hand remote MDR630154R**

Dana's bed is a full electric bed with a wired pendant. The pendant plugs into the bed controller using an 8 pin DIN which in most cases implies that motor current passes through the pendant and it takes a combination of two switches working together to drive the linear actuators. The downside of beds that are wired in that fashion is you cannot easily offer dual control of the bed (ie, voice and handheld at the same time). The best we can offer is to add a switchbox to allow for easier switching between the voice controller and the standard pendant.

After assessing the handheld pendant (MDR630154R), I was pleased to find out that the head up/down and feet up/down were using simple contact closure. The lift and lower signal wires are also simple contact closure, but have an M7F diode between the pendant and the bed controller. In our design, we put a 1N4007 in place of the M7F diode. We do not offer voice control of lift and lower for safety reasons. By adding a RJ50 breakout board, we were able to provide a connector on our controller for a handheld pendant while having a direct connection between our bed controller and the activated bed controller. This is really the ideal solution where the caregiver can use the handheld for lifting or lowering the bed as needed, and also have a backup method of manually controlling head up/down and foot up/down should wifi or internet go down.

**Here is a schematic of the bed controller design**

**Voice Controlled Bed Controller for Dana B, mechanical relays to drive the  
Medline Full Electric bed, manual control for Lift and Lower  
Bill Weis 8-11-2021  
S/N 20067.02**



**2. Be able to use voice commands to control the TV** – We provided Dana with an Amazon Fire TV Cube so she could use voice commands to control her TV.

**Resources**

[Amazon Echo](#)

[Alexa Support](#) (Contact Support via the Amazon Alexa app)

Alexa Fire TV Cube support numbers

888-280-2073