

**Requirements:**

1. Be able to use Tobii to alert Caregiver

**Solution – High Level:**

1. We provided a solution that allows Melanie to use a custom button we created in Communicator 5 to initiate an alert notification to the Adaptive Tech Solutions wireless Wi-Fi receivers so the caregiver can respond.

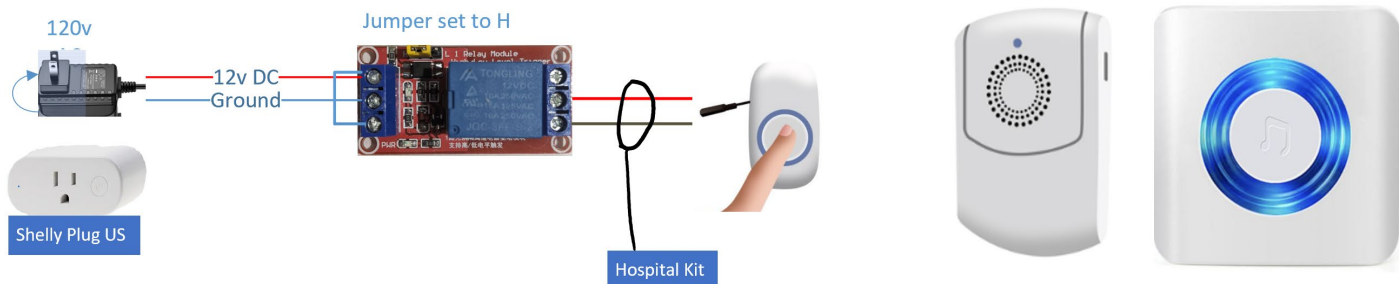
**Details of the Solution**

**1 – Be able to use the Tobii Device to Alert Caregiver** – Melanie has ALS which has progressed to where Melanie cannot use hands or voice to alert a caregiver. We provide a solution that allows Melanie to use a custom button on his Tobii to activate Adaptive Tech Solutions receivers so the caregiver can respond. This same kit has been used in hospital to alert the nurse's desk by replacing the Adaptive Tech Solutions with cables.

**Call Attendant for Home and Hospital for Tobii User**

Home - use relay box + WDBA-FX-M-Plug Kit

Hospital – replace the button with the Hospital Kit

**Parts Needed**

Adaptive Tech Solutions Attendant Call WDBA-FX-M-Plug \$75.00  
 12v Power Supply - Sansun (Amazon) \$5.18  
 12v Relay board - (Amazon) \$1.50  
 1/8" 3.5mm Male plug w/wire \$3.00  
 uxcell 100mmx68mmx40mm \$10.49  
 Shelly Plug US (Smart plug) \$21.00  
 Hospital Kit -  
 3.5mm female to 1/4" male \$8.82  
 1/4" mono male to dual mono 1/4" female \$10.18  
 1/4" male to 1/4" female 15ft extension cord \$12.59

**Requirements for the Eye Gaze device** – The eye gaze device must be able to execute a curl command. A Windows Based Tobii running Communicator 5 works, cannot speak for other platforms. The most straightforward way of implementing the Shelly Plug US is to use the default gateway IP address. A direct connection is then made between the Tobii and the Shelly Plug. This approach would require adding a dedicated USB Wifi device to the Tobii if the user wants to be able to use the Tobii for internet related activities. (Browser, email, etc). Therefore make sure the Tobii has an available USB port, otherwise you need to add a USB Hub. The Shelly Plug can utilize DHCP, but this would require reconfiguring the Shelly plug when moving between facilities.

**Code For Shelly Plug US on Tobii (Call.bat)**

```
curl http://192.168.33.1/rpc/Switch.Toggle?id=0
timeout /t 5
curl http://192.168.33.1/rpc/Switch.Toggle?id=0
```

A custom button on the tobii screen executes the above code

**Wires From Power Supply**

Red -> +12v to "+DC" terminal  
 Black -> Ground wire to "-DC" terminal  
 Jumper wire connects "+DC" terminal to "In" terminal

**Power supply plugs into Smart Plug**

Shelly Plug US is controlled by an object on the Tobii screen that executes a small batch file. (See code)

**Relay wires to Adaptive Tech Solutions button – 3.5mm (1/8")**

Red wire to relay Common terminal  
 Brown wire to Relay Normally Open terminal