

# **Bruce S. Project – Detailed view (v1)**

By Bill Weis

## **Bruce S - ALS**

Requirements:

1. Be able to voice control his Pride Vivalift! Tranquil PLR-935 lift chair.

Solution – High Level:

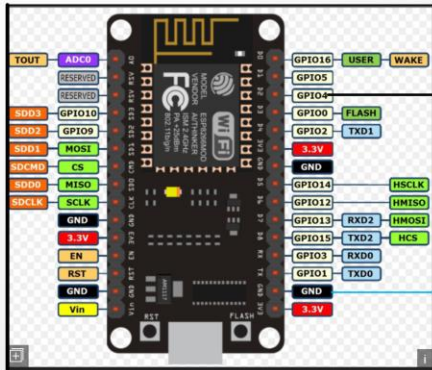
1. We designed a voice activated solution for his Pride recliner.

## **Details of the Solution**

**1 - Voice Control her recliner** – Bruce has a Pride VivaLift! Tranquil PLR-935 lift chair and the impact of ALS has made it very difficult for him to use the hand controller. Bruce plans to spend a lot of time in that chair and it is important that he is able to control the positioning of the chair as well as having the ability to control the comfort features like changing pressure in the lumbar and head pillows. At this time, Pride Mobility does not have an alternative solution for someone with Bruce's impairments to be able to control the chair, so we went ahead and designed a voice which gives him the ability to control all 10 functions that would normally have been performed using the remote. Our solution replaces the standard remote and should there be an internet outage it would be necessary for someone to plug in the original hand remote.

Here is a basic design of the controller we built for Bruce's lift chair

Bruce S. | Recliner Project  
 Pride VivaLift Tranquility PLR935  
 Hand Controller HSW310-VA  
 S/N 21103.09



HSW310-VA Hand remote has 5 Pin male DIN Connector

Pin #	Purpose
1. Red	LEDs for each button on remote
2. Yellow	Pin 12 of PIC16F1828
3. Green	+5v
4. White	Ground
5. Blue	Pin 10 of PIC16F1828

For our solution, we only needed to connect our controller to the recliner using DIN connector pin 4 for a common ground and pin 5 so we can provide the digital signal to the chair. Our control box replaces the hand remote. The control box in the chair is a HHC Moto Motion CM310 L06-20201670028

This is the 5 pin DIN male connector



The pinouts for the 5 pin DIN male connector are:

There is one linked connector - 5 pin DIN female. Click here for details.



Using a 15030HC-G harness

- Pin 1 - Orange
- Pin 2 - Yellow
- Pin 3 - Green
- Pin 4 - Blue
- Pin 5 - Black

## Resources

[Amazon Echo](#)

[Alexa Support](#) (Contact Support via the Amazon Alexa app - can have them call your number)

[Google Home getting started](#)

[Google Home Help Forum](#)

[Google Home Support](#) Phone number for Google Home hardware support = 855-971-9121 (24/7 days a week)

[Logitech Harmony Knowledge Base](#)

[Logitech Harmony Support](#) Phone # for Support = 866-601-5644 (M-F 8am to 6pm PST)

[Sunco Lighting-](#) Support: (844) 334-9938

[Wemo Support](#) Phone number for Support = 1-844-745-wemo (9366)