

Donna C. Project – Detailed view (v1)

By Bill Weis

Requirements:

1. Be able to voice control her TV
2. Be able to control her Semi-Electric Drive bed using voice commands

Solution – High Level:

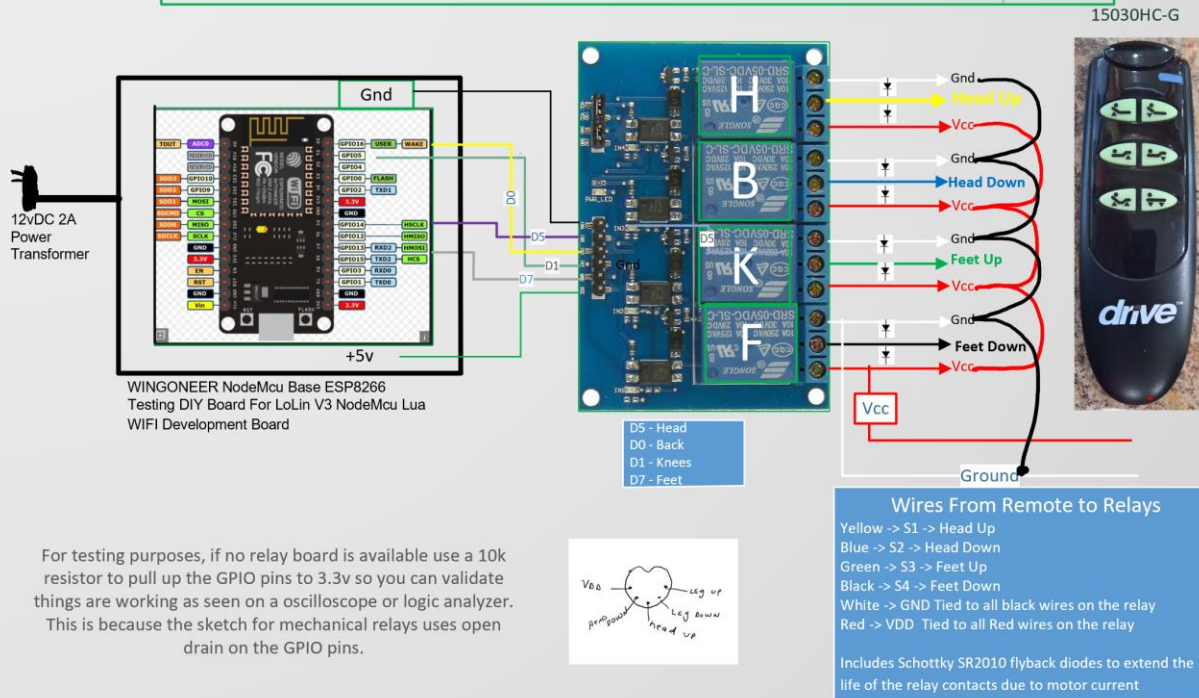
1. We provided an Amazon Fire TV Cube so Donna could control her TV using voice commands.
2. Designed a voice activated bed controller which gave Donna the ability to control all desired functions of her adjustable bed using eye gaze control.

1. Be able to control her TV using Voice commands – To help Donna with the need to control her TV using voice commands, we provided an Amazon Fire TV Cube.

2. Be able to voice control her bed (Semi-electric Drive bed) Donna has ALS which has left her with limited control over her hands. We designed a voice activated bed controller which will give Donna the ability to control her adjustable bed with a variety of commands. All commands run for a predetermined length of time and Donna can choose the command that best suits her needs. The head of the bed can be raised/lowered in 1,2,3,4,5 &6 second intervals. It will require multiple commands to go from a flat position to a full up sitting position, but this approach is done for safety reasons. The foot end of the bed can be raised/lowered in 3, 4 or 5 second intervals. The voice activated controller box replaces the standard 15030HC-G hand controller.

Here is a schematic of the bed controller design

Voice Controlled Bed Controller for Semi-Electric Drive bed (Donna C.)
 Bill Weis 7/25/2023
 S/N 20084.12



Resources

[Amazon Echo](#)

Amazon Fire TV Cube support 888-280-4331

[Alexa Support](#) (Contact Support via the Amazon Alexa app - can have them call your number)

[Google Home getting started](#)

[Google Home Help Forum](#)

[Google Home Support](#) Phone number for Google Home hardware support = 855-971-9121 (24/7 days a week)