

Christopher – Duchenne Muscular Dystrophy (v1)
Detailed view by Bill Weis

Requirements:

1. Be able to voice control his adjustable bed

Solution – High Level:

1. Designed a voice activated bed controller which gives Christopher the ability to control the Head Up/Down and Foot Up/Down functions of his semi-electric Drive bed model 15015F with Linak CB6197-00 controller and pendant HB00-U039-00 which has a Drive part number of 15004HCN-L.

Details of the Solution

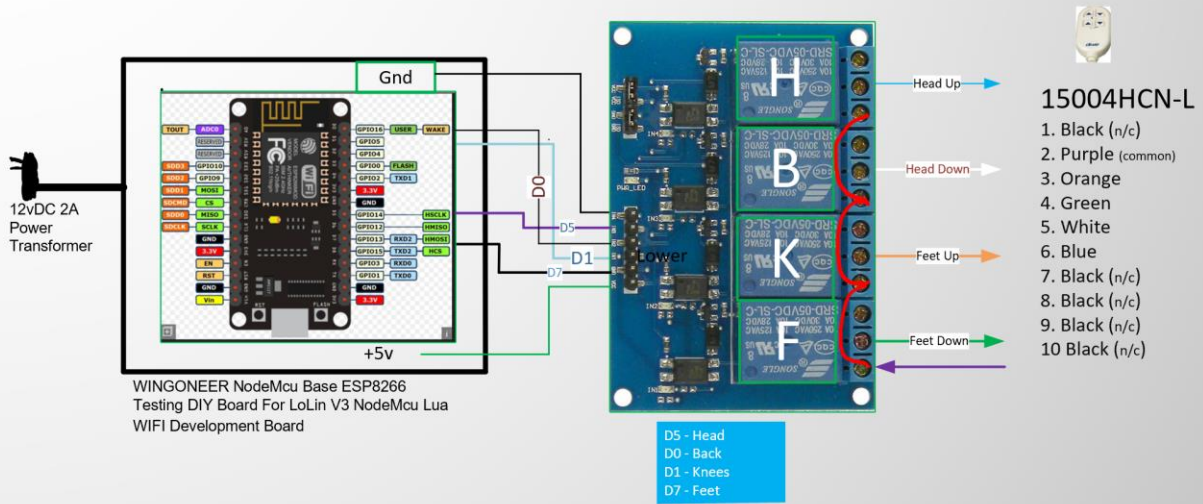
1 – Voice Control his bed – Christopher has a semi electric Drive bed model 15015F which is controlled by a HB00-U039-00 pendant. (The Drive part number for this pendant is 15004HCN-L. This bed is a 4-function bed which includes Head Up, Head Down, Foot Up, and Foot Down. Our controller plugs into the HB port on the Linak controller which is where the hand pendant normally connects, so we added an RJ50 port to our controller so the hand control can be plugged in. By adding the RJ50 port on our controller, both voice as well as manual control of the bed will be possible.

The voice commands can be issued through Alexa.

We provided Chris with the ability to move the head of the bed up/down for durations of 1-6 seconds and the foot of the bed up/down for 2-5 seconds. Routines were created to simplify the commands.

Here is a Visio diagram of the solution.

Voice Controlled Bed Controller for Christopher, mechanical relays to control the Drive Semi Electric bed Model 15015F with Linak CB6197-00 control box and HB00-U039-01 hand pendant (15004HCN-L)
Bill Weis 4-27-2022
S/N 22110.04



This Drive bed model uses a Linak CB6197-00 control box and the hand remote that was plugged into the bed was a Linak HB00-U039-01. The Drive part number for this remote is 15004HCN-L. The color wiring for the remote differs from the invacare 1115288 on the unused wires, but other than the common wire the rest match up. We put an RJ50 connector on the box for manual control of the bed while our box plugs into the HB port on the Linak control box. Our standard Invacare controller will work fine with this bed.